


Post Mortem Examination

A photograph of three chickens standing on a green lawn. In the foreground, a white chicken with a prominent red comb and wattle is shown in profile, facing left. Behind it to the left is a black chicken, and to the right is a brown chicken. The background is a soft-focus green lawn.

Mike Petrik, DVM, MSc.
For Egg Farmers of Alberta
Nov 17/2021

Picture 1



Post Mortem Examination



- Question 1 – What Organ System is abnormal
 - A) Respiratory
 - B) GI
 - C) Reproductive
 - D) Musculoskeletal
- Question 2 - Would you take samples
 - A) Yes – for culture
 - B) Yes – for histology
 - C) Yes – for both
 - D) No

Picture 2



Picture 2



- Question 1 – What Organ System is abnormal
 - A) Respiratory
 - B) GI
 - C) Reproductive
 - D) Musculoskeletal
- Question 2 - Would you take samples
 - A) Yes – for culture
 - B) Yes – for histology
 - C) Yes – for both
 - D) No

Picture 3



Picture 3



- Question 1 – What Organ System is abnormal
 - A) Respiratory
 - B) GI
 - C) Reproductive
 - D) Musculoskeletal
- Question 2 - Would you take samples
 - A) Yes – for culture
 - B) Yes – for histology
 - C) Yes – for both
 - D) No

Picture 4



Picture 4



- Question 1 – What Organ System is abnormal
 - A) Respiratory
 - B) GI
 - C) Reproductive
 - D) Musculoskeletal
- Question 2 - Would you take samples
 - A) Yes – for culture
 - B) Yes – for histology
 - C) Yes – for both
 - D) No

Picture 5

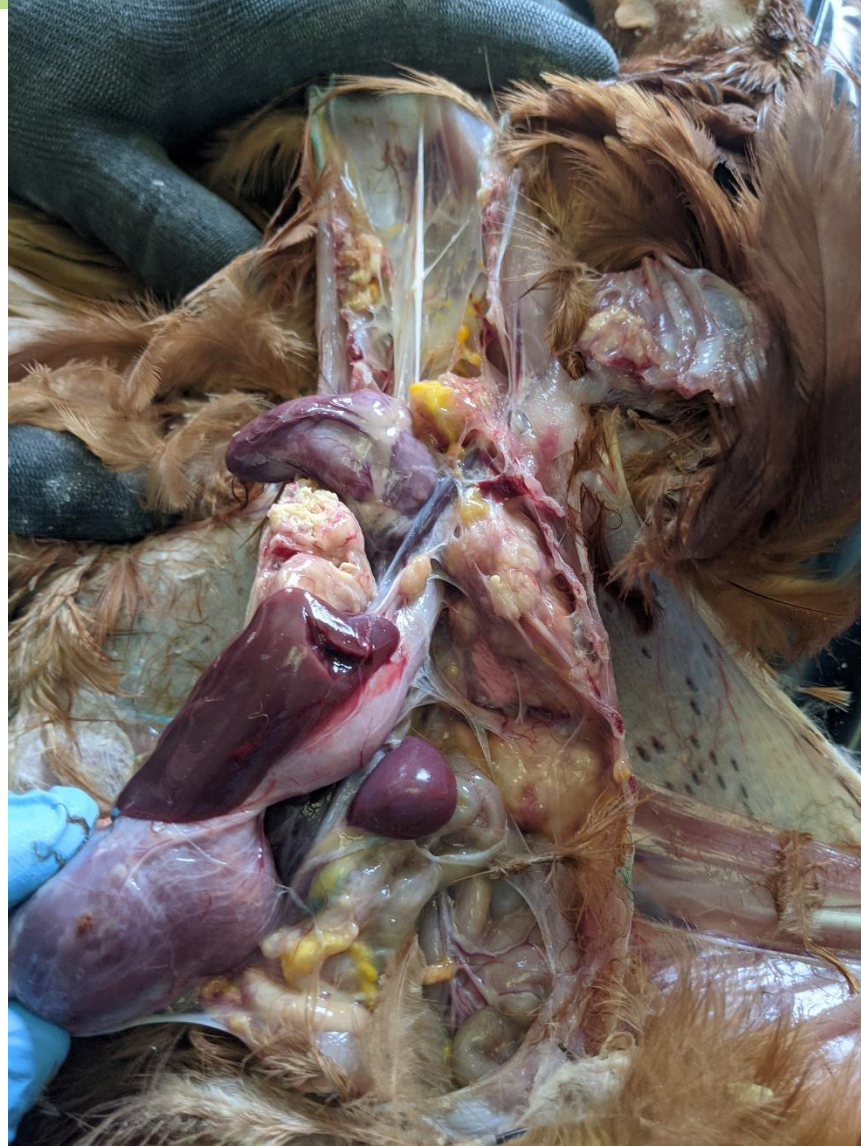


Picture 5



- Question 1 – What Organ System is abnormal
 - A) Respiratory
 - B) GI
 - C) Reproductive
 - D) Musculoskeletal
- Question 2 - Would you take samples
 - A) Yes – for culture
 - B) Yes – for histology
 - C) Yes – for both
 - D) No

Picture 6



Picture 6



- Question 1 – What Organ System is abnormal
 - A) Respiratory
 - B) GI
 - C) Reproductive
 - D) Musculoskeletal
- Question 2 - Would you take samples
 - A) Yes – for culture
 - B) Yes – for histology
 - C) Yes – for both
 - D) No

Picture 7



Picture 7



- Question 1 – What Organ System is abnormal
 - A) Respiratory
 - B) GI
 - C) Reproductive
 - D) Musculoskeletal
- Question 2 - Would you take samples
 - A) Yes – for culture
 - B) Yes – for histology
 - C) Yes – for both
 - D) No