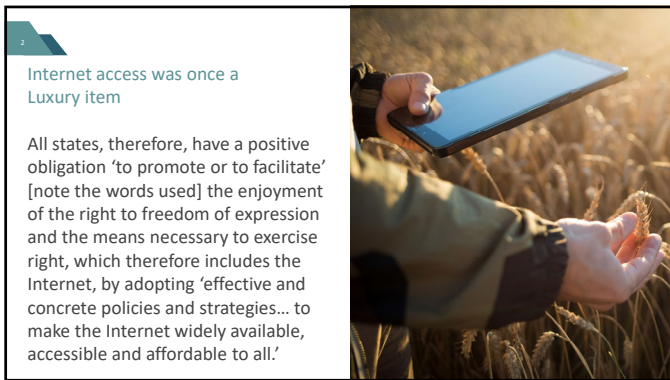
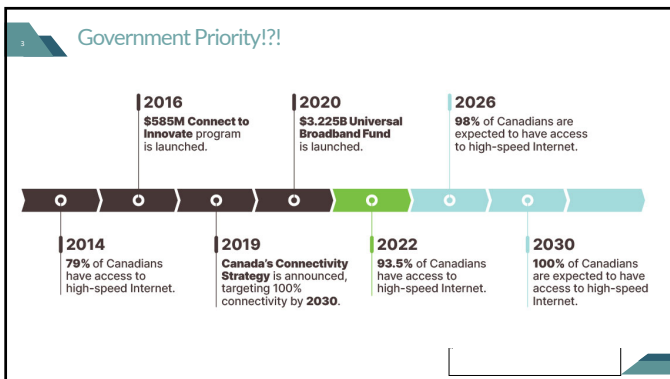




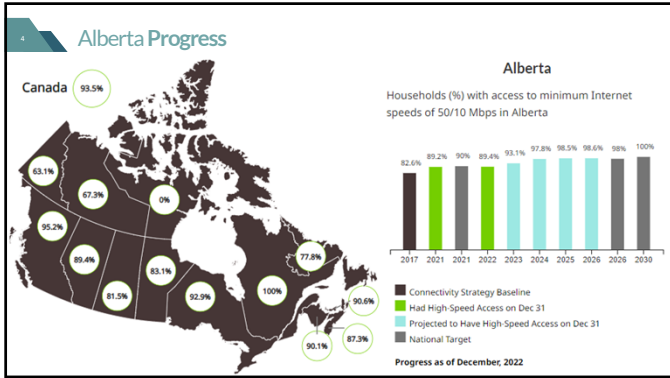
1



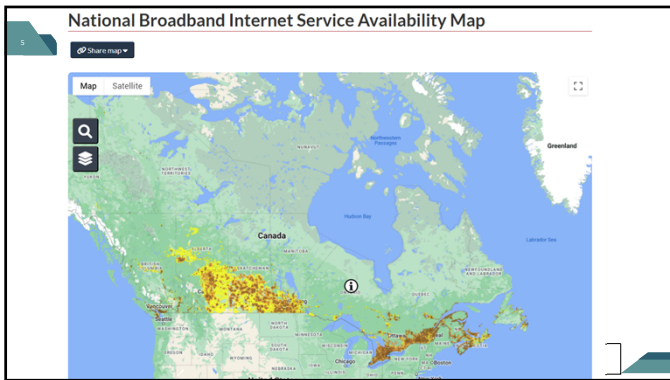
2



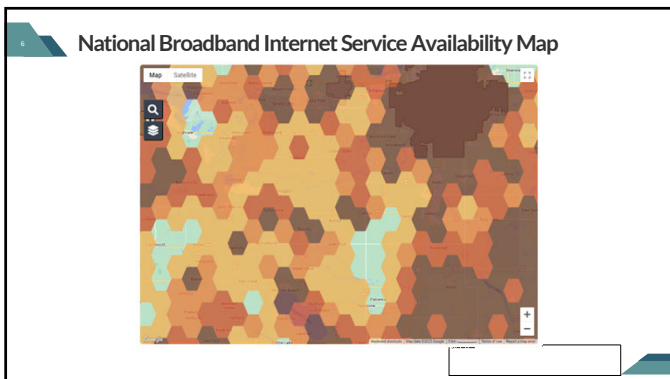
3




4



5



6



What is Mbps?

- Megabits per second
- The higher your Mb, the faster your Internet connection

7




Download/Upload

8

What speed do you need?

Download speed of **.5-4 Mbps** Slow. Ideal for people who don't use the internet much and don't have many devices.



Browse the Web on 1 Device (Check email, use social media, etc.)

Stream Video in (SD)


Video Chat in Standard Definition (SD)

9

10 What speed do you need?

Download speed of **5-10** Mbps

Mediocre speed. 1-3 people can be online at the same time doing common activities.




10

11 What speed do you need?

Download speed of **25-50** Mbps

Good speed. Enough for 1 person to do intensive activities on 1 device or a few people to do common activities on a few devices.

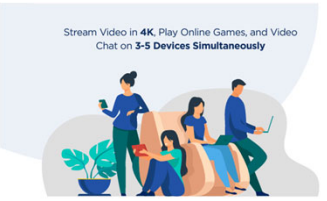


11

12 What speed do you need?

Download speed of **50-100** Mbps

Fast speed. For people who stream movies, frequently use the internet, and have multiple smart home devices



12

13 What speed do you need?

Download speed of **100 + Mbps**

Lightning-fast speed. More than enough for several people to do multiple intensive activities without interruptions.

Stream 4K Movies on 5 or More Devices

Download 100MB Files in Seconds.



13

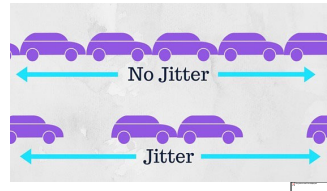
14 Let's talk Upload Speeds

- 1-3 Mbps – slow, only basic activities, eg video chats
- 3-6 Mbps – mediocre – enough to do common activities, eg live streaming HD video
- 6-20 Mbps – good – enough to do some intensive activities eg upload 100MB file in under 2 minutes
- 20-50 Mbps – fast - More than enough to do several intensive activities at the same time without interruptions

14

15 Ping and Jitter

Ping ms 59




15



16

DSL


- Have a landline? You may be able to use this service – if the wiring in your area is sufficient.
- This isn't marketed much anymore, so speeds are hard to discuss.



17

Mobile Internet Options

Internet Only vs Internet + phone line



18

Fixed Point Wireless Internet

1. Fixed point wireless internet uses line-of-sight radio towers to transmit information
2. This grid can be anywhere line-of-sight is available, so it does not require costly cables
3. Is not impacted by adverse weather, and can be distributed anywhere within coverage range

Fixed Wireless

19

Satellite

Strigo

An essential tool no matter where you work

The Strigo Connectivity Kit is now yours for just **\$650**

Get 1 GB of free data (a \$1,000 value) when you purchase a new device and SIM Card.

We'll double your data on every Prepaid Voucher you purchase at no extra cost.

20

LEO
In Motion

GEO
Static

Satellite

21



Is Starlink better?

- The satellites used by existing internet services orbit at 35,000 km above the earth, where latencies (round trip data time) are around 700 ms while Starlink's low orbit constellation is only 550 km above the earth – over 60 times closer.

22

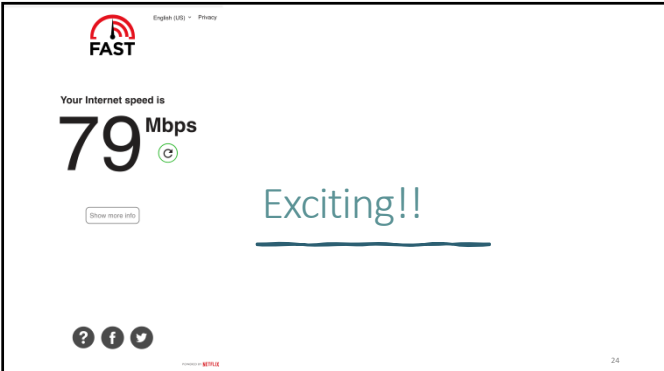
22



Installation

23

23



FAST

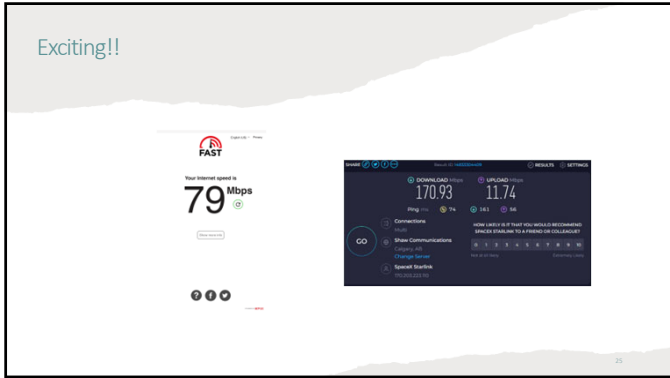
Your Internet speed is

79 Mbps

Exciting!!

24

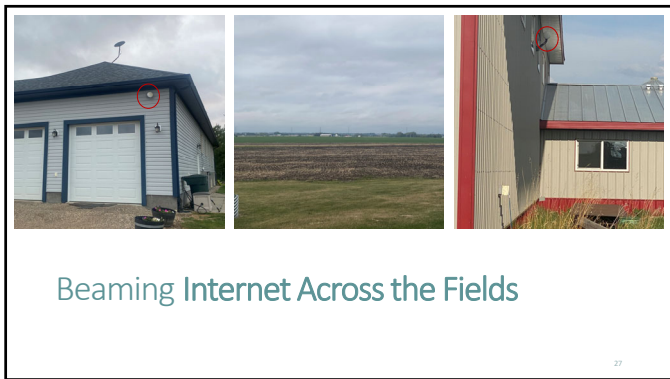
24



25



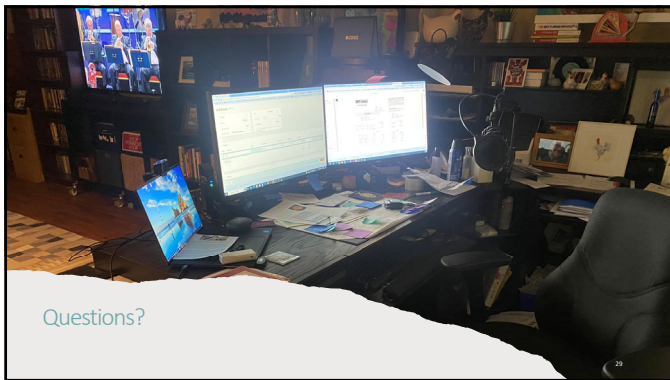
26



27



28



29
